

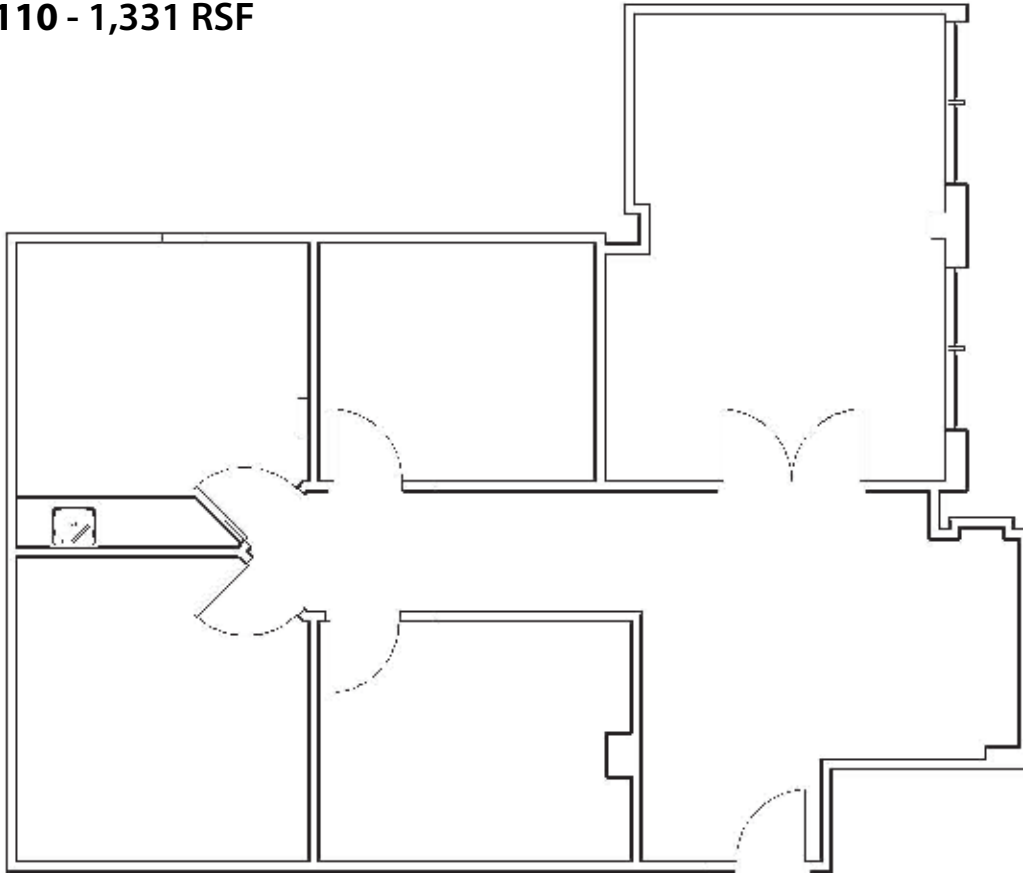


# PROMENADE PARK

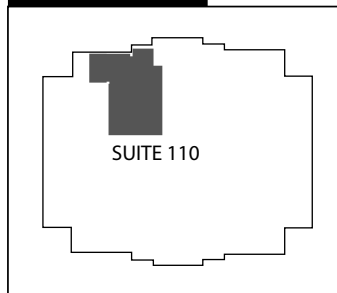
3915 Cascade Road, Atlanta GA 30331

Class "A" Office & Medical Office Building

## SUITE 110 - 1,331 RSF



### KEY PLAN



All information contained herein is believed to be accurate but is not warranted.

**DAVID W. AYNES**

404.348.4448

david@atlantaleasing.com

www.atlantaleasing.com/promenade



**ATLANTA LEASING  
& INVESTMENT**